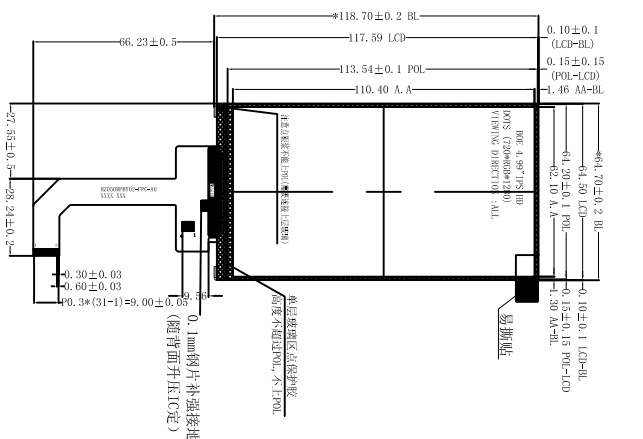


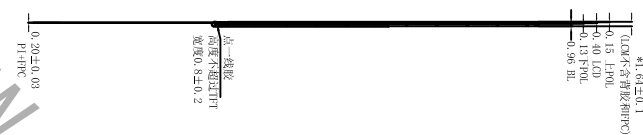
ROSH

Revision	Description	Date	Signed
V0	First	24.3.19	Allen
V1	更新背光	24.10.31	Pengliz

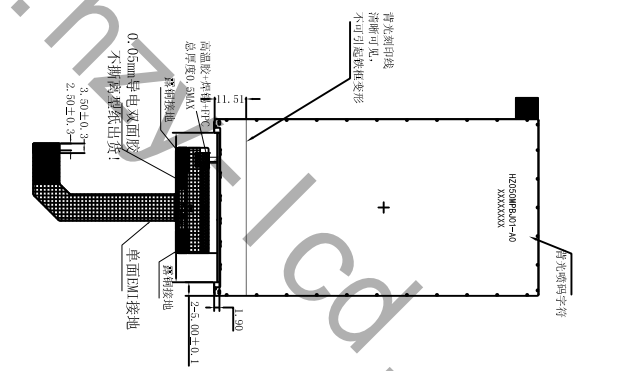
正视图



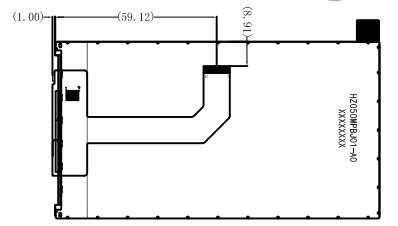
侧视图



背视图



弯折示意图



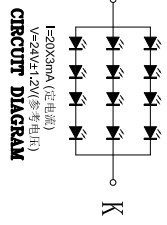
FPC弯折示意图
FPC预弯折出货
(不撕FPC离型膜出货)

LCM:MPI 4L

No.	PIN NAME
1	GND
2	D3+
3	D3-
4	GND
5	D2+
6	D2-
7	GND
8	CLK+
9	CLK-
10	GND
11	D1+
12	D1-
13	GND
14	D0+
15	D0-
16	GND
17	LED+
18	LED-
19	NC (5.5V)
20	NC (5.5V)
21	NC (TE)
22	LCM-RST
23	VCC3 (3V)
24	I/OVCC (1.8V)
25	NC (I/O)
26	CTP-CC 2.8V
27	CTP-SCL 1.8V
28	CTP-SDA 1.8V
29	CTP-INT 1.8V
30	CTP-RST 1.8V
31	GND

PIN	Assignment
1	CTP-VCC 2.8V
2	CTP-SCL 1.8V
3	CTP-SDA 1.8V
4	CTP-INT 1.8V
5	CTP-RST 1.8V
6	GND

- NOTES:
1. DISPLAY TYPE: BOE 4.99" TFT, TRANSMISSIVE
 2. DRIVER IC: ILI9881C
 3. VIEWING DIRECTION: ALL
 4. BACKLIGHT: 12 pcs White LED 4串3并/双芯片/(24V±1.2V)/50mA BRIGHTNESS: 500cd/m²(TYP)
 5. INPUT CURRENT: VCC 2.8V(TYP)
 6. OPERATING TEMP: -20°C~70°C
 7. STORAGE TEMP: -30°C~80°C
 8. UNDEFINED DIMENSION TOLERANCE: ±0.3mm
 9. ROHS COMPLIABLY



华之洋
HUA ZHI YANG

深圳市华之洋光电科技有限公司
SHENZHEN HZY PHOTOELECTRIC TECHNOLOGY CO., LTD

Customer Ref.	Model No.	Drawing Title	Unmarked Tolerance	Unit	Scale	Page
---	---	HZ050MPBY02-A0	±0.3	mm	---	1 of 1

- LED型号/类型/分辨率: BOE4.99"/TFT/720*1280
 驱动芯片: ALL
 驱动IC: JH9881D04-03
 LED驱动/连接方式/电流: 12 1串3并/±1.2V/50mA/400mA/400mA
 接口宽度: 500μm (TYP)

Part No.	Approve	Material	Date
---	---	LCM	2024.3.19
Drawing No.	Checked	Unit	Rev 00
---	---	mm	00
---	Draw	Allen	---

