

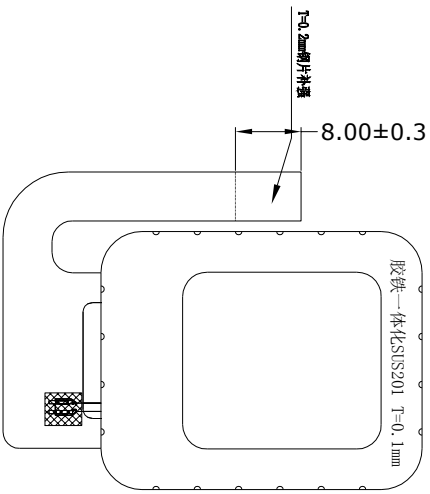
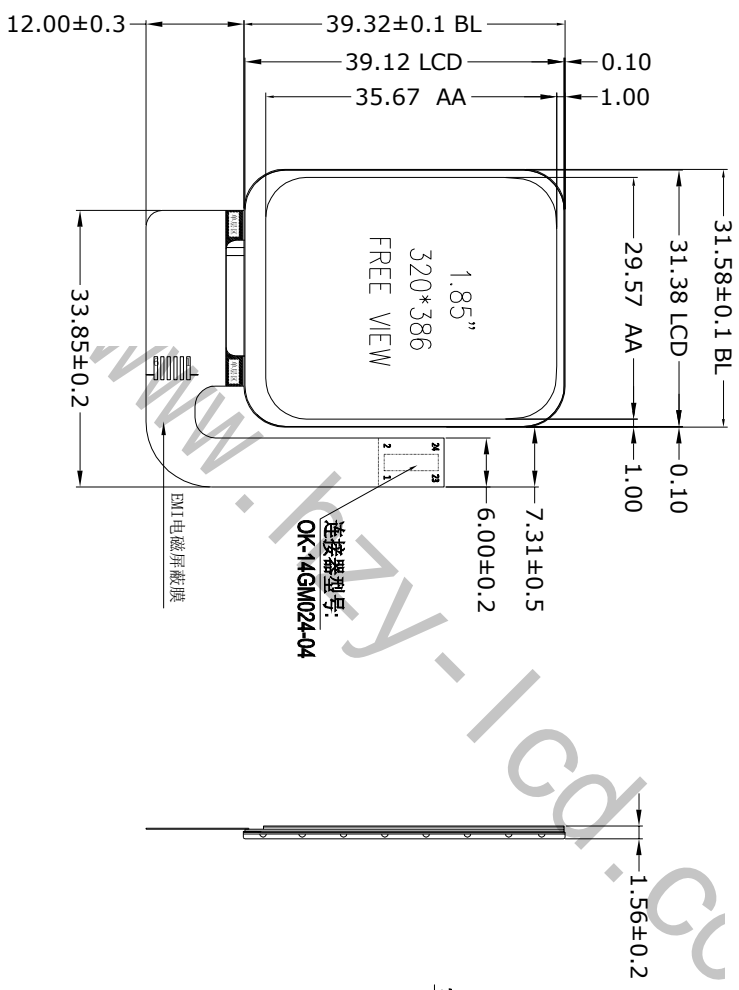
ROSH

Revision	Description	Date	Signed
A0	First	23. 10. 30	Allen

正视图

测视图

背视图



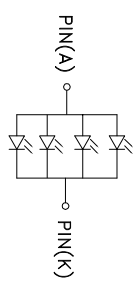
Pin#	NAME
1	SD0
2	LEDK
3	SD1
4	LCD TE
5	SD2
6	GND
7	SD3
8	GND
9	LCD CLK
10	LEDA
11	LCD CS
12	LEDA
13	LCD RST
14	LCD YDD3V3
15	CTP RST
16	LCD_YDD3V3
17	CTP INT
18	GND
19	CTP SDA
20	GND
21	CTP SCL
22	CTP VDD
23	GND
24	GND

TP定义

Pin#	Assignment
1	TP_SCL
2	TP_SDA
3	TP_RST
4	TP_INT
5	TP_VDD
6	TP_GND

VDD供电电压 VDD=2.8V  
I<sup>2</sup>C通讯电压 VDDIO=1.8V

- NOTES:
1. DISPLAY TYPE: 1.85" TFT, TRANSMISSIVE
  2. DRIVER IC: GC9B71
  3. VIEWING DIRECTION: ALL O'CLOCK
  4. BACKLIGHT: 4 pcs White LED
  5. INPUT CURRENT: VCC 2.8V (typ)
  6. OPERATING TEMP: -20° C ~ +70° C
  7. STORAGE TEMP: -30° C ~ +80° C
  8. UNDEFINED DIMENSION TOLERANCE: ±0.2mm
  9. ROHS COMPLIABLY



VF=3.2V; IF=80mA  
LED CIRCUIT DIAGRAM



深圳市华之洋光电科技有限公司  
SHENZHEN HZY PHOTOELECTRIC TECHNOLOGY CO., LTD

Customer Ref.	Model No.	Drawing Title	HZ1850PPBG02C-A0	
Part No.	Approve	Material	Unmarked	Unit
Drawing No.	Checked	TLCM	±0.2	mm
Draw	Draw	Date	2023. 10. 30	Rev 00